

USER MANUAL



AUTOMATIC CHLORINE DOSER

P2, Block B

Lake Town

Kolkata 700089

India

www.zimbawater.com



**UNPACKED
COMPONENTS**



**ASSEMBLE
STAND**



**PLACE ZIMBA
ON STAND**



**REMOVE
LOCK & COVER**



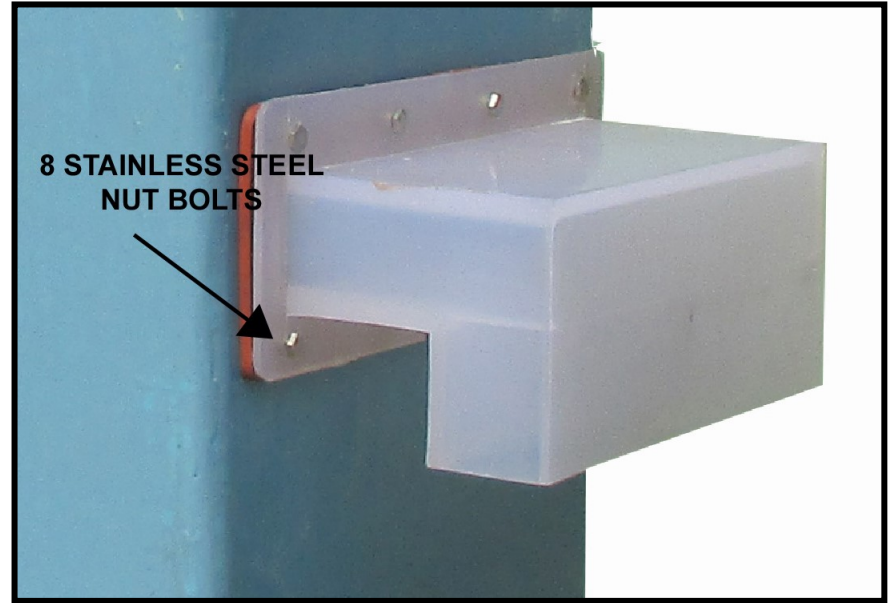
**REMOVE
DISPENSER**



REMOVE SIPHON TANK



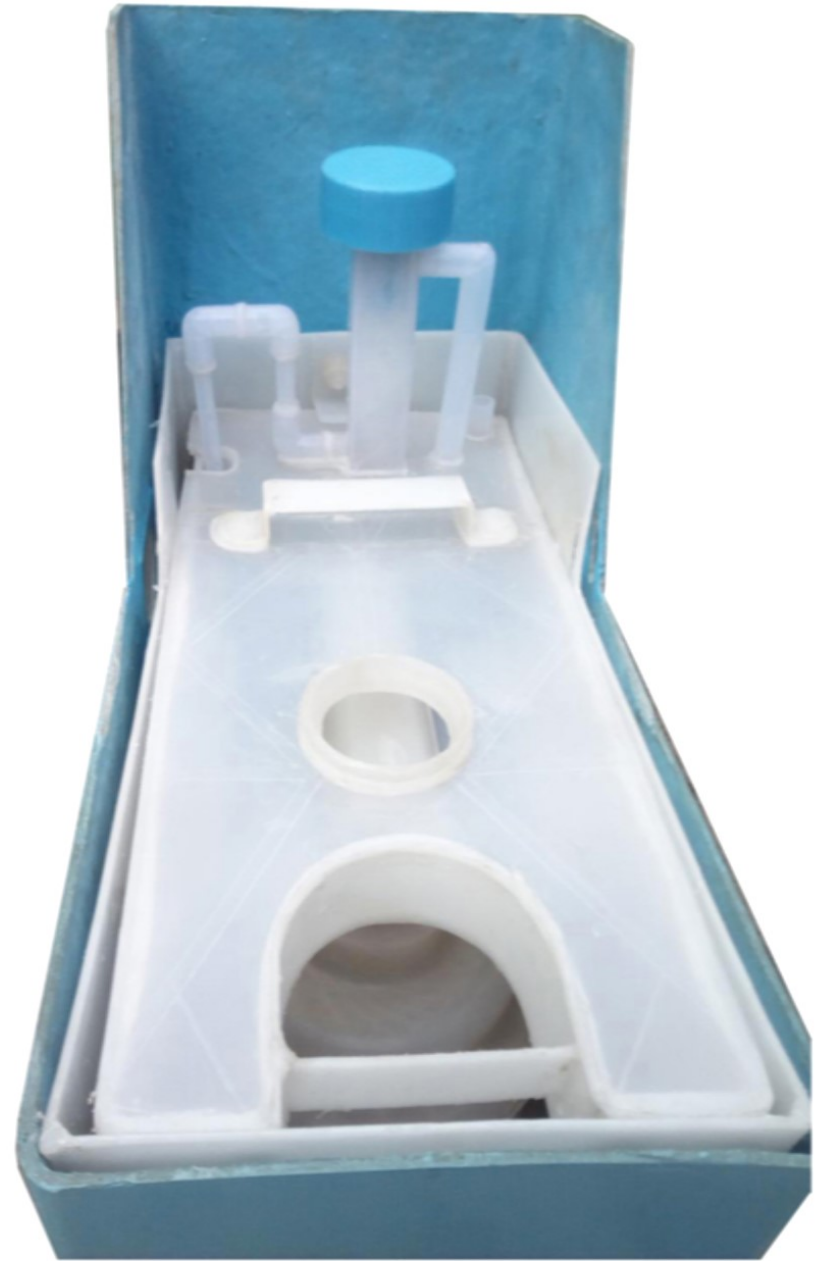
***AVOID HOLDING
THE SIPHON VENT PIPE
TO LIFT THE SIPHON TANK***



***ATTACH FAUCET ASSEMBLY AND OVERFLOW SPOUT
TO OUTER TANK***



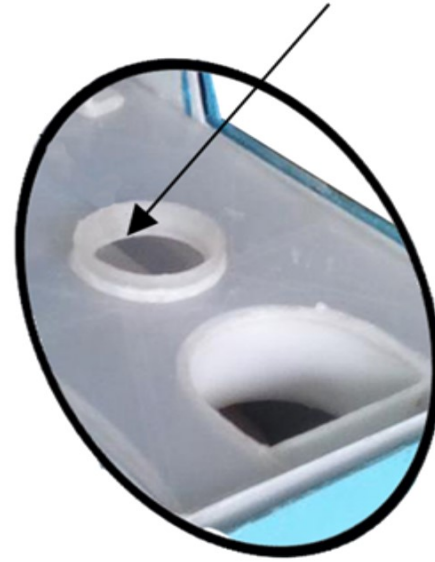
FILL THE SIPHON U-TUBE WITH WATER



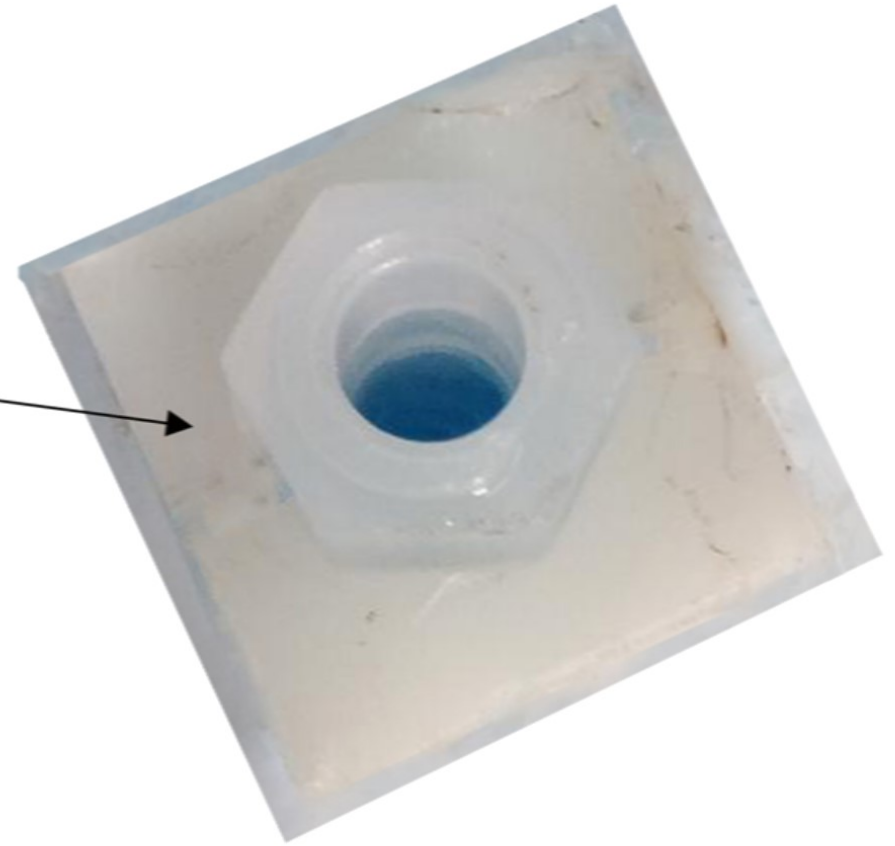
REPLACE SIPHON TANK AND DISPENSER



NEVER FILL ABOVE THIS POINT



**POUR CHLORINE
(SODIUM HYPOCHLORITE SOLUTION) HERE**



**UNSCREW THE BLUE CAP.
ROTATE THE 'BOLT HEAD' TO ADJUST DOSE VOLUME.
ROTATING CLOCKWISE WILL INCREASE DOSE (MAXIMUM 6.5 ml).
ROTATING ANTI-CLOCKWISE WILL DECREASE DOSE (MINIMUM 2.5 ml).**



REPLACE CAP.
ENSURE THE CAP IS TIGHTENED PROPERLY.
LEAKS WILL RESULT IN MALFUNCTIONING.

Dimensions in cm.



CHLORINE LEVEL INDICATOR



OPEN LOCK, ROTATE LID FOR REFILLING CHLORINE SOLUTION

UNTREATED WATER ENTRY FROM HERE

ZIMBA IS NOW READY FOR USE

(OPENING THE WHITE COVER WILL NOW ONLY BE REQUIRED IF DOSE HAS TO BE ADJUSTED,

PRECAUTIONS

- Make sure the Blue Cap screws on well after dose adjustment to make an air-tight seal.
- The Zimba unit (or the Stand) should be placed on a flat horizontal place. Tilting may result in malfunctioning of the device.
- Avoid spilling of Chlorine solution while refilling.
- If required, use the vent at the rear right corner of the dispenser to drain out chlorine solution from the dispenser.

DOSE ADJUSTMENT

The dose volume required will depend on:-

- (i) Concentration of chlorine solution in the reservoir of the dispenser.
- (ii) Chlorine demand of untreated water.
- (iii) Required level of residual chlorine in output water.

(World Health Organization recommends 0.2 ppm to 2.0 ppm for drinking water)

To start with, we recommend using 0.5% chlorine solution in the Reservoir and the lowest setting of the Dose. If the chlorine level in the output is lower than that required increase the dose to get the desired output.

After any adjustment of dose or chlorine concentration in the device, discard 5 flushes before measuring chlorine in output water.

TROUBLE SHOOTING

SIPHON NOT FLUSHING.

Water inflow into Zimba is greater than 15 liters/minute. Open cover and siphon out water from the siphon tank by using a flexible pipe.

Water in U-Tube of siphon dried up due to non-use for a long time. Prime the siphon and restart.

NO DOSING. NO CHLORINE IN OUTPUT WATER.

No chlorine solution in reservoir.

Dose-adjuster cap not tightened enough to seal air leaks.

EXCESS CHLORINE IN OUTPUT WATER.

Damage in dispenser resulting in chlorine leak. Bring out the dispenser and fill it up with water or chlorine solution. Keep it in an upright position over a dry surface and observe for at least 30 minutes for any dripping from any point. Report the matter to us.

WATER COMING OUT FROM OVERFLOW VENT.

Overflow will occur if the inflow into Zimba exceeds outflow from Zimba. Overflowing water is also chlorinated and may be collected in a bucket for use.